

pTRE3G

Catalog No(s).

631162, 631163 & 631173 (Not sold separately). Sold as part of 631167, 631168 & 631169.

Amount

20 µl pTRE3G Vector (500 ng/µl)

Lot Number

Specified on product label.

pTRE3G Vector Information

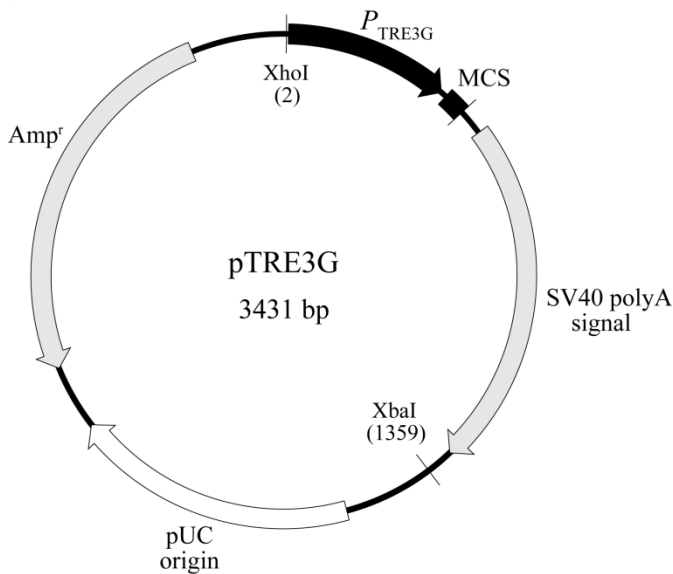


Figure 1. pTRE3G vector map.

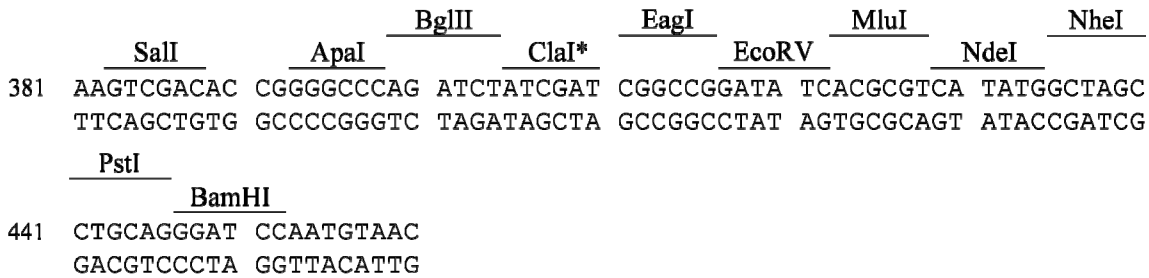


Figure 2. pTRE3G multiple cloning site.

*The ClaI restriction site is blocked by dam methylation as a result of overlapping with the dam methylase site. Therefore, if you want to perform a restriction with ClaI, you have to propagate the pTRE3G-IRES vector in a dam⁻ bacterial strain such as Clontech's Stellar Competent Cells (dam⁻/dcm⁻) Cat. No. 636764.

Clontech Laboratories, Inc.

A Takara Bio Company
1290 Terra Bella Avenue, Mountain View, CA 94043, USA
U.S. Technical Support: tech@clontech.com

United States/Canada 800.662.2566
Asia Pacific +1.650.919.7300
Europe +33.(0)1.3904.6880
Japan +81.(0)77.543.6116
Late update: July 12, 2011

Location of Features

- P_{TRE3G} (3rd generation Tet-responsive promoter): 7–382
- MCS (multiple cloning site): 383–452
- SV40 polyA signal: 507–1304
- pUC origin of replication: 1569–2212
- Amp^r (ampicillin resistance gene; β -lactamase): 2360–3220 (complementary)

NOTICE TO PURCHASER:

Clontech products are to be used for research purposes only. They may not be used for any other purpose, including, but not limited to, use in drugs, in vitro diagnostic purposes, therapeutics, or in humans. Clontech products may not be transferred to third parties, resold, modified for resale, or used to manufacture commercial products or to provide a service to third parties without prior written approval of Clontech Laboratories, Inc.

Your use of this product is also subject to compliance with the licensing requirements listed below and described on the product's web page at <http://www.clontech.com>. It is your responsibility to review, understand and adhere to any restrictions imposed by these statements.