

GST-Tag Mouse mAb

Cat. QYA04234C

Background

Epitope tags are useful for the labeling and detection of proteins using immunoblotting, immunoprecipitation, and immunostaining techniques. Because of their small size, they are unlikely to affect the tagged protein's biochemical properties. Glutathione S-transferase (GST) is a widely used fusion partner, since it provides both an easily detectable Tag and a simple purification process with little effect on the biological function of the protein of interest.

Source

The antibody was affinity-purified by affinity-chromatography using specific immunogen.

Product

Each vial contains 100ug mouse IgG diluted in 100ul of PBS pH7.4 containing 0.02% sodium azide and 50% glycerol. The antibody concentration is 1mg/ml.

Specificity

The antibody detects C-terminal, internal, and N-terminal GST-tag fusion proteins.

Applications and Suggested Working Concentration

WB: 1:5000-1:10000

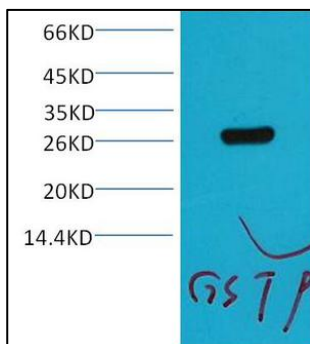
Storage

Storage at -20°C. Do not aliquot the antibody. Stable for one year from the date of shipment.

Research Use

For research use only, not for use in diagnostic procedures.

Data



Western blot analysis of GST-tag fusion protein in 293 cells. Antibody was diluted at 1:5000.

GST-Tag Mouse mAb

Catalog No.	QYA04234C
Size.	100ug
Source.	Mouse
Immunogen.	Synthetic Peptide
Purification.	The antibody was affinity-purified from mouse antiserum by affinity-chromatography using specific immunogen.
Specificity.	The antibody detects C-terminal, interal, and N-terminal GST-tag fusion protein.
Formulation.	PBS, pH 7.4, containing 0.02% sodium azide and 50% Glycerol.
Concentration.	1 mg/ml
Storage / Stability.	-20°C/1 year
Reactivity.	N/A
Applications.	WB
Dilution.	WB:1:5000-1:10000