

Histone H3 Rabbit pAb

Cat. QYA04502B

Background

Histones are basic nuclear proteins that are responsible for the nucleosome structure of the chromosomal fiber in eukaryotes. This structure consists of approximately 146 bp of DNA wrapped around a nucleosome, an octamer composed of pairs of each of the four core histones (H2A, H2B, H3, and H4). The chromatin fiber is further compacted through the interaction of a linker histone, H1, with the DNA between the nucleosomes to form higher order chromatin structures. This gene is intronless and encodes a replication-dependent histone that is a member of the histone H3 family. Transcripts from this gene lack polyA tails; instead, they contain a palindromic termination element. This gene is found in the large histone gene cluster on chromosome 6p22-p21.3.

Source

Histone H3 rabbit polyclonal antibody is produced by immunizing animals with the internal region of human Histone H3 protein. The antibody was affinity-purified by affinity-chromatography using specific immunogen.

Product

Each vial contains 100ug rabbit IgG diluted in 100ul of PBS pH7.4 containing 0.02% sodium azide and 50% glycerol. The antibody concentration is 1mg/ml.

Specificity

The antibody detects endogenous Histone H3 proteins.

Applications and Suggested Working Concentration

WB: 1:5000-1:10000

IHC: 1:200-1:500

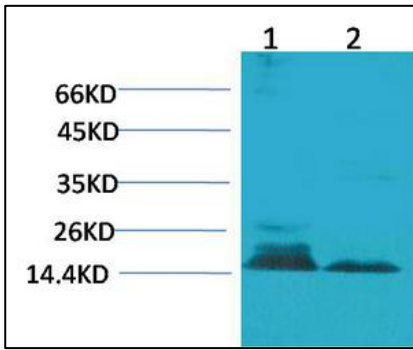
Storage

Storage at -20°C. Do not aliquot the antibody. Stable for one year from the date of shipment.

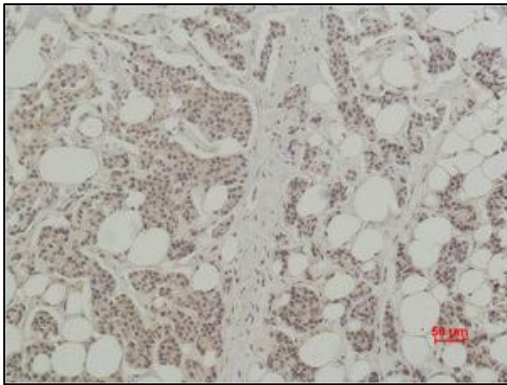
Research Use

For research use only, not for use in diagnostic procedures.

Data



Western blot analysis of 1.Hela 2.3T3. Antibody was diluted at 1:5000.



IHC staining of paraffin-embedded human breast carcinoma. Antibody was diluted at 1:200.

Histone H3 Rabbit pAb

Catalog No.	QYA04502B
Size.	100ug
Gene Name.	HIST1H3A/HIST1H3B/HIST1H3C/HIST1H3D/HIST1H3E/HIST1H3F/HIST1H3G/HIST1H3H/ HIST1H3I/HIST1H3J/HIST2H3A/HIST2H3C/HIST2H3D/H3F3A/H3F3B
Protein Name.	Histone H3.1/Histone H3.2/Histone H3.3
Source.	Rabbit
Immunogen.	Synthetic Peptide
Purification.	The antibody was affinity-purified from rabbit antiserum by affinity-chromatography using specific immunogen.
Specificity.	The antibody detects endogenous Histone H3 protein.
Formulation.	PBS, pH 7.4, containing 0.02% sodium azide and 50% Glycerol.
Concentration.	1 mg/ml
Storage / Stability.	-20°C/1 year
Human Gene ID.	8350/8351/8352/8353/8354/8355/8356/8357/8358/8968
Human Swiss-Prot No.	P68431/Q71DI3/P84243
Rabbit Gene ID	319152/15077/15078
Rabbit Swiss-Prot No.	P68433/P84228/P84244
Rat Gene ID	291159/100361558
Rat Swiss-Prot No.	Q6LED0/P84245
Reactivity.	H, M, R
Applications.	WB, IHC
Predicted band (Da)	15273
Observed band (KDa)	15
Dilution.	WB:1:5000-1:10000, IHC:1:200-1:500
Other name.	Histone H3; HIST1H3A; H3FA; HIST1H3B; H3FL; HIST1H3C; H3FC; HIST1H3D; H3FB; HIST1H3E; H3FD; HIST1H3F; H3FI; HIST1H3G; H3FH; HIST1H3H; H3FK; HIST1H3I; H3FF