

GAPDH Rabbit pAb

Cat. QYA03820A

Background

This gene encodes a member of the glyceraldehyde-3-phosphate dehydrogenase protein family. The encoded protein has been identified as a moonlighting protein based on its ability to perform mechanistically distinct functions. The product of this gene catalyzes an important energy-yielding step in carbohydrate metabolism, the reversible oxidative phosphorylation of glyceraldehyde-3-phosphate in the presence of inorganic phosphate and nicotinamide adenine dinucleotide (NAD). The encoded protein has additionally been identified to have uracil DNA glycosylase activity in the nucleus. Also, this protein contains a peptide that has antimicrobial activity against *E. coli*, *P. aeruginosa*, and *C. albicans*. Studies of a similar protein in rabbit have assigned a variety of additional functions including nitrosylation of nuclear proteins, the regulation of mRNA stability, and acting as a transferrin receptor on the cell surface of macrophage. Many pseudogenes similar to this locus are present in the human genome. Alternative splicing results in multiple transcript variants.

Source

GAPDH rabbit monoclonal antibody is produced by immunizing animals with the internal region of human GAPDH protein. The antibody was affinity-purified by affinity-chromatography using specific immunogen.

Product

Each vial contains 100ug rabbit IgG diluted in 100ul of PBS pH7.4 containing 0.02% sodium azide and 50% glycerol. The antibody concentration is 1mg/ml.

Specificity

The antibody detects endogenous GAPDH protein.

Applications and Suggested Working Concentration

WB: 1:5000

IHC: 1:200

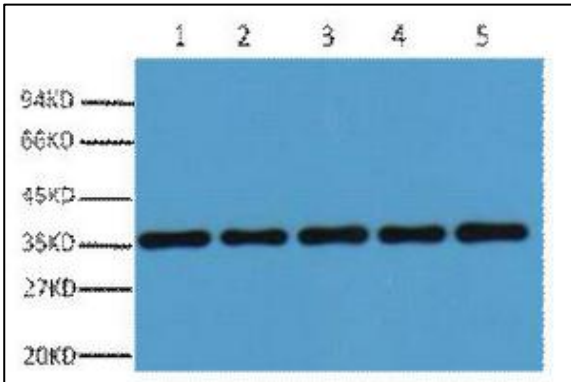
Storage

Storage at -20°C. Do not aliquot the antibody. Stable for one year from the date of shipment.

Research Use

For research use only, not for use in diagnostic procedures.

Data



Western blot analysis of 1.293T 2.Rat brain 3. NIH 3T3
4.Sheep Muscle 5.Rabbit testis. Antibody was diluted at
1:20000.

GAPDH Rabbit pAb

Catalog No.	QYA03820A
Size.	100ug
Gene Name.	GAPDH
Protein Name.	GAPDH, glyceraldehyde-3-phosphate dehydrogenase
Source.	Rabbit
Immunogen.	Recombinant Protein
Purification.	The antibody was affinity-purified from rabbit antiserum by affinity-chromatography using specific immunogen.
Specificity.	The antibody detects endogenous GAPDH protein.
Formulation.	PBS, pH 7.4, containing 0.02% sodium azide and 50% Glycerol.
Concentration.	1 mg/ml
Storage / Stability.	-20°C/1 year
Human Gene ID.	2597
Human Swiss-Prot No.	P04406
Rabbit Gene ID	100042025
Rabbit Swiss-Prot No.	P16858
Rat Gene ID	24383
Rat Swiss-Prot No.	P04797
Reactivity.	H, M, R, Rb, Ch, Mk, Sh, X
Applications.	WB, IHC
Predicted band (Da)	36053
Observed band (KDa)	37
Dilution.	WB:1:5000 IHC: 1:200
Other name.	GAPDH; GAPD; CDABP0047; OK/SW-cl.12; Glyceraldehyde-3-phosphate dehydrogenase; GAPDH; Peptidyl-cysteine S-nitrosylase GAPDH